

**NOTES:**

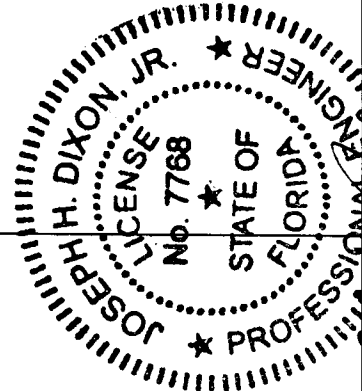
- 1 THESE DOORS HAVE BEEN EVALUATED TO COMPLY WITH THE FLORIDA BUILDING CODE.
- 2 INTERMEDIATE SUPPORT IS FURNISHED FOR DOORS OVER 14' WIDE.
- 3 BRACKET SIZE VARIES BASED ON DOOR SIZE.
- 4 WINDLOCKS ON EVERY SLAT.
- 5 DOORS USED IN THE HVHZ SHALL NOT HAVE WIDTHS IN EXCESS OF THE TEST DOOR WIDTH OF 14'-4" AND SHALL NOT EXCEED THE DESIGN PRESSURE OF +/- 52.0 PSF.

NO.	BY	DATE	REVISION
3	RG	4/9/12	FLA CODE COMPLIANCE
2	RG	4/30/07	2004 CODE COMPLIANCE
1	RG	12/20/06	2004 CODE COMPLIANCE
	RG	4/29/04	ORIGINAL DRAWING

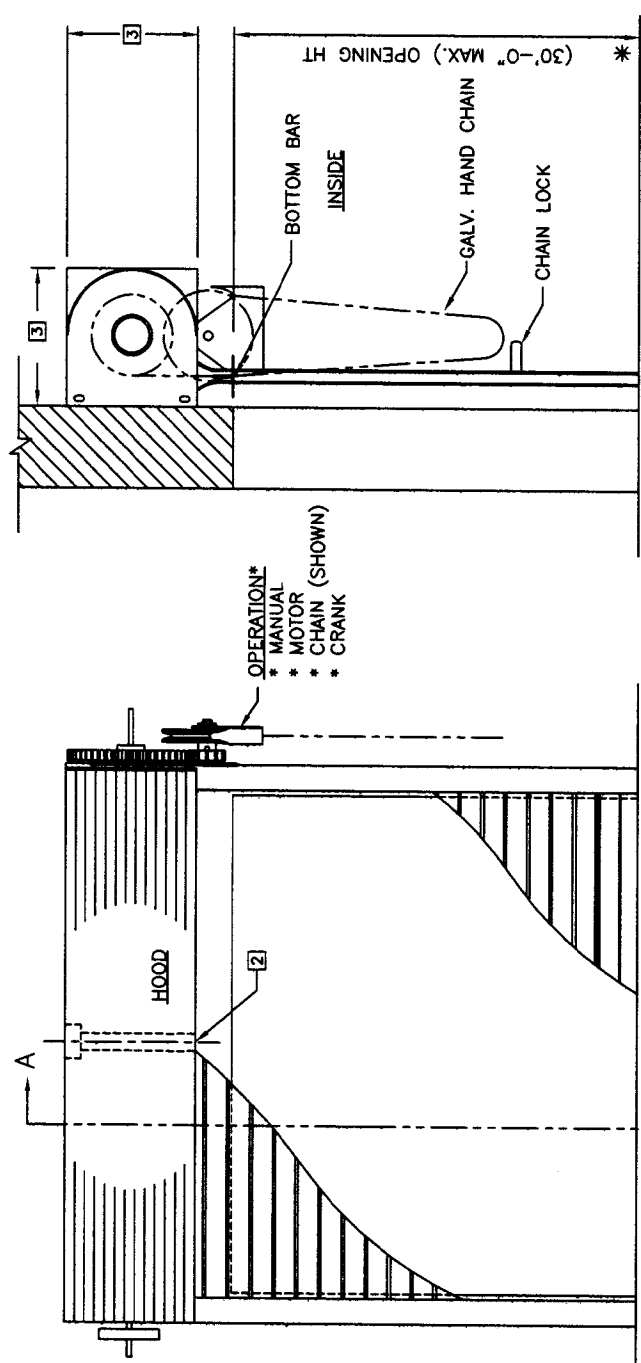


OOKSON ROLLING DOORS  
 2417 S. 50TH AVE.  
 PHOENIX, AZ 85043  
 800 TULIP DRIVE  
 GASTONIA, NC 28052

FLORIDA WIND DOORS, DESIGN TYPE A  
 ENG NAME: JOSEPH H. DIXON JR./COOKSON APPROVAL  
 DISCIPLINE: STRUCTURAL BY:  
 FLA REGISTRATION: 7768 DATE:  
 DWG NO. WLCD-001-A-2004 1 OF 3

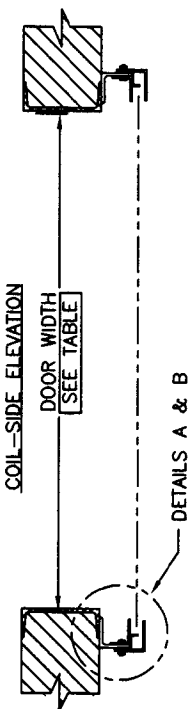


*Handwritten signature and date:*  
 4/12/12



SECTION A-A

DOOR WIDTH Up TO	DESIGN WIND PRESSURES IN PSF	
	#5	#5
10'	±95.8	±98.3
11'	±81.1	±82.9
12'	±69.9	±71.2
13'	±61.1	±62.1
14'	±54.0	±54.8
14'-4"	±52.0	±52.7
15'	±48.3	±48.9
16'	±43.5	±44.0
17'	±39.5	±39.8
18'	±36.0	±36.4
19'	±33.3	±33.3
20'	±30.7	±30.7
21'	±28.5	±28.5
22'	±26.5	±26.5
23'	±24.7	±24.7
24'	±23.1	±23.1

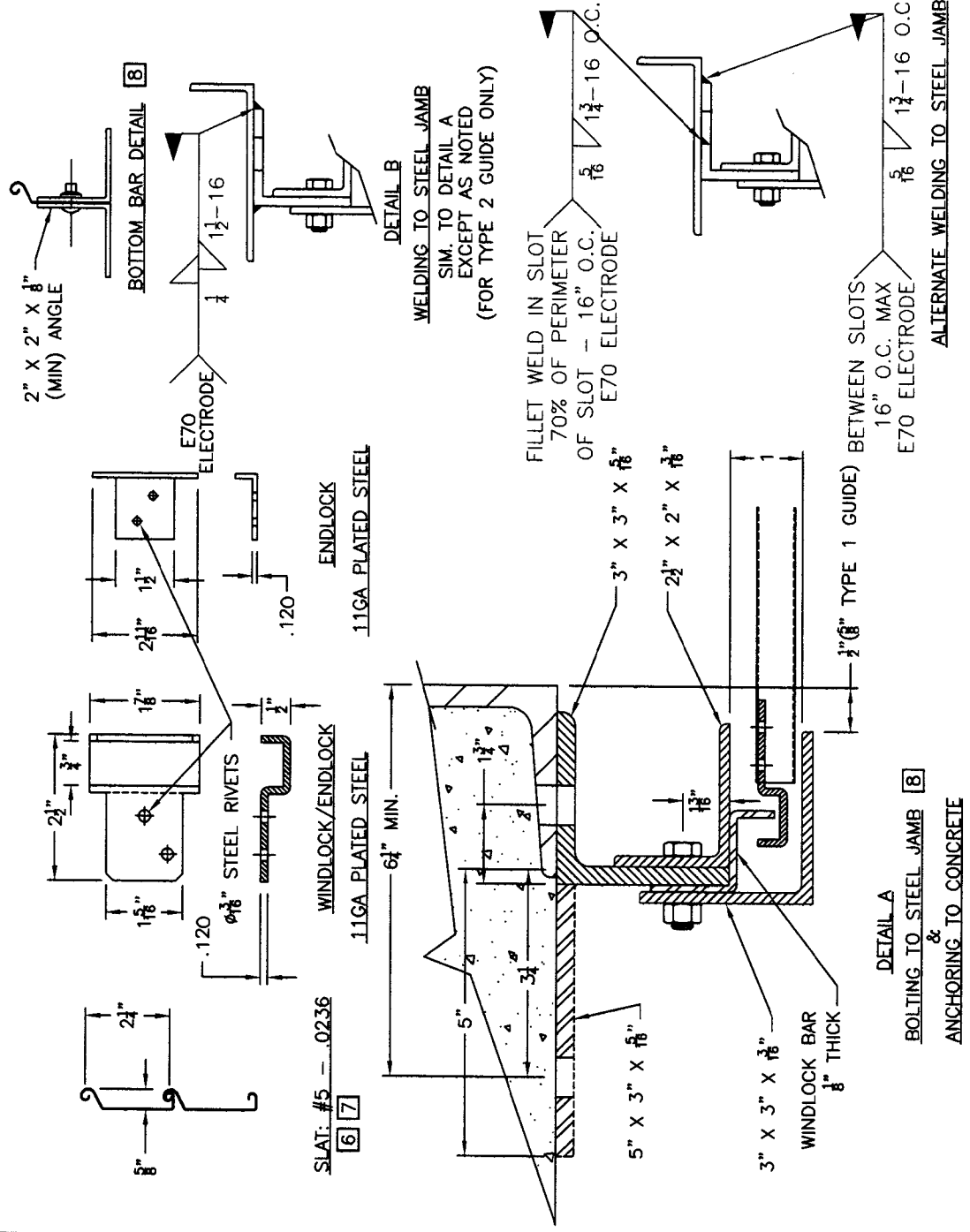


FASTENER SCHEDULE				
WINDLOCK SPACING	CONCRETE ANCHOR	MINIMUM EMBEDMENT	WALL ANGLE BOLTS (GRADE 5)	GUIDE ANGLE ASSEMBLY BOLTS
1	1/2" Ø 8" O.C.	3 1/2"	5/8" Ø 16" O.C.	3/8" Ø 18" O.C.
NON-HVHZ	1/2" Ø 8" O.C.	3 1/2"	5/8" Ø 16" O.C.	3/8" Ø 18" O.C.
CONCRETE 4000 PSI MIN.				

FLORIDA WIND DOORS, DESIGN TYPE A

**NOTES:**

- [6] SLAT MATL: GALVANIZED STEEL OR STAINLESS STEEL.
- [7] DECIMAL THICKNESS LISTED IS MINIMUM.
- [8] GUIDE/BOTTOM BAR MATL: STEEL OR STAINLESS STEEL.



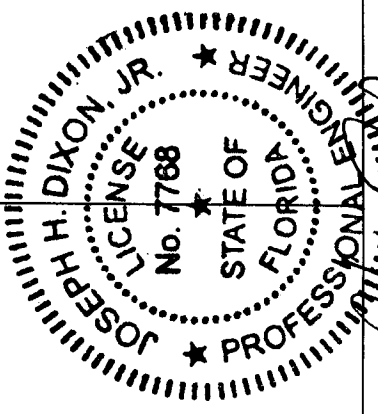
**FLORIDA WIND DOORS, DESIGN TYPE A**

NO.	BY	DATE	REVISION
3	RG	4/9/12	FLA CODE COMPLIANCE
2	RG	4/30/07	2004 CODE COMPLIANCE
1	RG	12/20/06	2004 CODE COMPLIANCE
	RG	4/29/04	ORIGINAL DRAWING

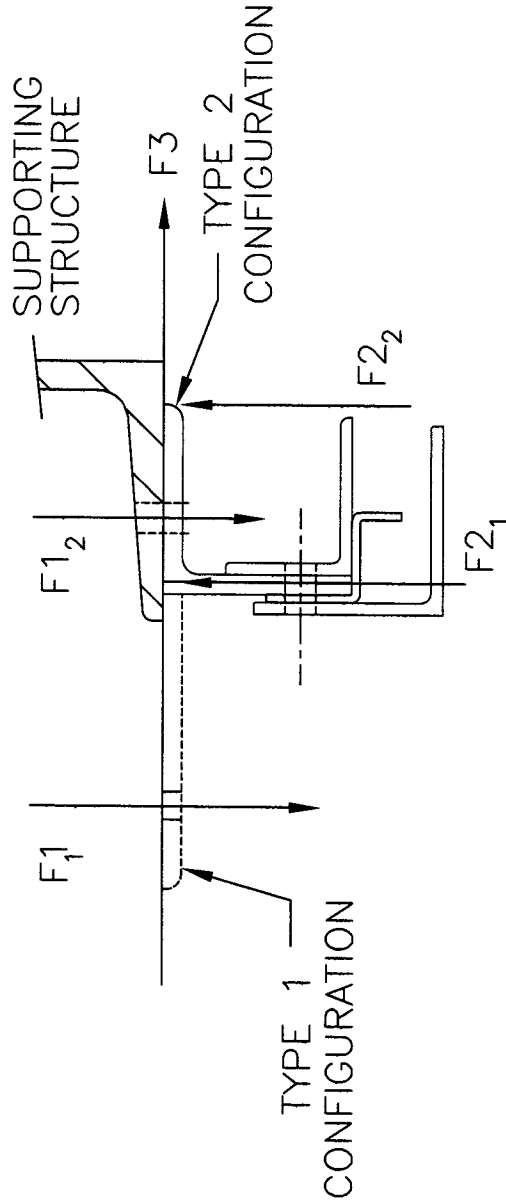


COOKSON ROLLING DOORS  
 2417 S. 50TH AVE.  
 PHOENIX, AZ 85043  
 800 TULIP DRIVE  
 GASTONIA, NC 28052

FLORIDA WIND DOORS, DESIGN TYPE A  
 ENG NAME: JOSEPH H. DIXON JR. | COOKSON APPROVAL  
 DISCIPLINE: STRUCTURAL | BY:  
 FLA REGISTRATION: 7768 | DATE:  
 OWG NO. WLC0-001-A-2004 | 2 OF 3



*Handwritten signature and date:*  
 4/12/12



FORCE ON STRUCTURE (#/FT.)

TYPE 1 GUIDE CONFIGURATION		TYPE 2 GUIDE CONFIGURATION									
POSITIVE		NEGATIVE		POSITIVE		NEGATIVE					
F1	F2	F1	F2	F1	F2	F1	F2				
1829	1454	1980	2386	2761	1980	5562	5187	1980	5398	5772	1980

FLORIDA WIND DOORS, DESIGN TYPE A

NO.	BY	DATE	REVISION
3	RG	4/9/12	FLA CODE COMPLIANCE
2	RG	4/30/07	2004 CODE COMPLIANCE
1	RG	12/20/06	2004 CODE COMPLIANCE
	RG	4/29/04	ORIGINAL DRAWING



**COOKSON ROLLING DOORS**  
 2417 S. 50TH AVE  
 PHOENIX, AZ 85043  
 800 TULIP DRIVE  
 GASTONIA, NC 28052

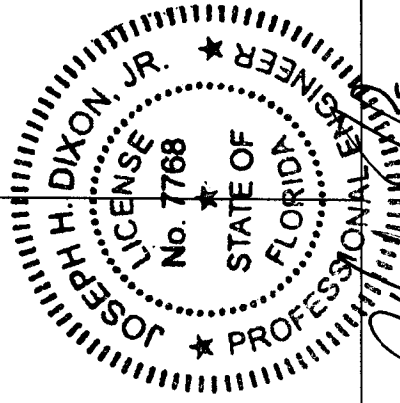
FLORIDA WIND DOORS, DESIGN TYPE A

ENG NAME: J. JOSEPH H. DIXON JR. / COOKSON APPROVAL

DISCIPLINE: STRUCTURAL / BY:

FLA REGISTRATION: 7768 / DATE:

DWG NO. WLCD-001-A-2004 / 3 OF 3



*J. Dixon*  
 4/12/12